

Superintendent's Report

June 12, 2023

Superintendent
Dr. Noriega-Murphy

Student Presentation



Makeila Scott

MHS Junior

Immigration Learning Center's
Immigration
Essay Contest
Winner

Celebrations

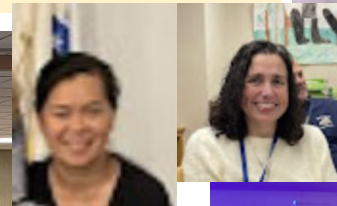


Principal Don Concannon



"I've learned that people will forget what you said, people will forget what you did, but people will never forget how you made them feel." –

Maya Angelou



Mission and Vision

Mission

Malden Public Schools, in partnership with families and our diverse community, is committed to providing a welcoming and inclusive environment for all students to cultivate a lifelong joy of learning, achieve their academic potential, and engage as compassionate global citizens.

“We believe all children can meet challenging expectations through a partnership among home, school, and community.”

Vision

Malden Public Schools students will develop the skills, knowledge, and character necessary to become informed, compassionate, and engaged members of a diverse local community.

CORE Values

Equity · Integrity · Resilience · Respect

Congratulations!



Class of 2023

Graduates: 409

4 year colleges: 58%

2 year colleges: 19%

Military: 0.5%

Tech/Trade school: 3.3%

Workforce: 14%

Other (family/travel/gap): 5.2%

- 4 students earned Associates Degrees from BHCC in concert with their MHS diploma
- 1 student earned their Certificate in Culinary Arts from BHCC

Total amount of Scholarship money through Malden - \$205,000



GRADES K - 8



EARLY LEARNING



GRADES K - 8



GRADES K-8



GRADES K - 8



GRADES K - 8



FY24 DISTRICT WIDE INSTRUCTIONAL FOCUS AND GOALS

INSTRUCTIONAL CORE: Students, Educators, Content

INSTRUCTIONAL FOCUS: Literacy, Numeracy, and to Reduce Chronic Absenteeism

GOAL 1 Increase Student Learning and Performance

GOAL 2 Create Coherent, Aligned, Measurable, Accountable Structures and Systems

GOAL 3 Mental Social & Emotional Needs to Create Safe Learning Environments

GOAL 4 Transparency, Communication, and Calibration

GOAL 5 Financial Planning – Life after Grants (ESSER III –ARP)

GOAL 6 Gather Data To Inform Practice

Pilot Honors Pathways Grades 6–8

162 Students



The goal for the pilot program was to start offering honors designation to middle school students starting Term 3 while putting the structures in place to monitor all of the criteria established for the honors program. The criteria communicated is as follows:

1. Honors Pathway was offered in the four separate core content areas: ELA, Math, Science, and History
2. Attendance 90-100%
3. Grades in the class as well as honors content: A+/B +
4. Homework completion 80+%
5. Differentiated assignments:
 - a. Complex multi steps assignments
 - b. Not more work, rather differentiated work
6. 10 hours of Community Service within their school community (e.i., reading Buddies, mentorship, etc.)
7. No disciplinary record




Principals in collaboration with teachers determined students who meet the Honors courses criteria by Term 3. (G1, 2, 3, 4, 5, 6)

Preliminary Spring Data - Kindergarten



As a district, we have 73% of students 'on Mid or Above and Early on Grade-Level' compared to 20% in the Fall

53% increase!!



Categories	Fall 2022		Spring 2023	
Mid or Above Grade Level	6%	22	46%	 168
Early On Grade Level	14%	52	27%	 96
One Grade Level Below	79%	287	27%	 98
Two Grades Level Below	N/A	N/A	N/A	N/A

Preliminary Spring Data - District i-Ready*

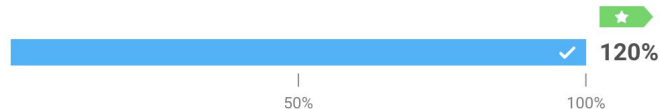
As a district, we have **54%** of students 'on-grade-level' compared to **31%** in the Fall

23% increase!!



Categories	Fall 2022		Spring 2023	
Mid or Above Grade Level	16%	600	35%	 1,321
Early On Grade Level	15%	572	19%	 699
One Grade Level Below	35%	1,306	23%	848
Two Grades Level Below	14%	539	9%	335
Three or More Grade Level Below	20%	743	15%	557

Progress to Annual Typical Growth (Median)



The median percent progress towards Typical Growth for this school is 120%. Typical Growth is the average annual growth for a student at their grade and baseline placement level.



Math: Preliminary IXL Data - K-5

*Data as of 5/31/23

On or above
increased from
47% to 54%

7% Increase!





Categories	Fall 2022		Spring 2023	
Above Grade Level	9%	257	13% 	363
On Grade Level	38%	1,062	41% 	1,124
Below Grade Level (1)	26%	716	26%	716
Far Below Grade Level (2+)	15%	403	18%	489
Not Pinpointed	12%	330	3%	76

Math Preliminary IXL Data - 6-8

*Data as of 5/31/23

On or above
increased from
23% to 34%

11% Increase

Categories	Fall 2022		Spring 2023	
Above Grade Level	6%	95	7% 	103
On Grade Level	17%	257	27% 	392
Below Grade Level (1)	20%	288	22%	330
Far Below Grade Level (2+)	49%	715	41%	605
Not Pinpointed	8%	117	3%	42

Equity: Welcoming Learning Environments

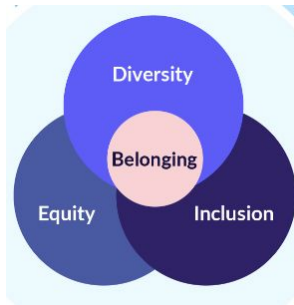
*Data as of 5/31/23

**“Equity is not a goal, a set of metrics, or a checklist. It is a way of being”
Intentionally - Deliberately - Purposely**

Christine Ortiz, Founder of Equity Meets Design

We partnered with the Anti-Defamation League (ADL) to provide professional development session to address bias in the educational setting, including:

- establishing a shared understanding of the different forms of bias (e.g., explicit, implicit, the "isms"), their personal and systemic manifestations, and their impact on staff, students and their families / caregivers
- developing effective bias incident intervention and prevention strategies (including use of ADL's bias incident response toolkit); and
- identifying actionable next steps to facilitate more inclusive and equitable classrooms and school communities.



Human Resources & Licensure Support

We currently have 20 staff enrolled in an SEI Course and 2 others completing through a degree program.

Content Licensure Attention Needed	Dec. '22	May 31, 2023
Staff on DESE Waivers	22	15
Staff on Emergency Licenses from 2020 (extendable per DESE)	13*	7*
Staff on Emergency Licenses from 2021/2022 (expiring at the end of the school year)	27*	12*
Staff with Expiring licenses	48	5
TOTALS:	110	39

SEI Endorsement Attention Needed	Dec. '22	May 31, 2023
Staff needing SEI Endorsement only	7	4
Staff needing SEI Endorsement and one of the licensure needs (left)	30	22
TOTALS:	37	26

*Original numbers adjusted to reflect broader range of "old" emergency licenses eligible for extension

JOIN US AT MALDEN PUBLIC SCHOOLS!

Located within the greater Boston area, MPS serves nearly 7,000 students in grades PreK-12. We're committed to providing high expectations for all learners through rigorous instruction and culturally responsive practices. **Are you ready to join us?**

OPEN POSITIONS FOR 2023-24:

- Teacher
- **Special Education Teacher**
- **ESL Teacher**
- School Psychologist
- Education Support Professionals

OUR SCHOOLS

- Early Learning Center
- Beebe School (K-8)
- Ferryway School (K-8)
- Forestdale School (K-8)
- Linden STEAM Academy (K-8)
- Salemwood School (K-8)
- Malden High School (9-12)

OUR COMMUNITY



6,800
STUDENTS

FROM



59
COUNTRIES

SPEAKING



67
LANGUAGES



**JOIN THE EARLY APPLICANT POOL
BY APPLYING TODAY!**

To apply, scan the QR code or visit
maldenps.tedk12.com



District Enrollment SY 2022-2023

September 12, 2022 6,337
June 10, 2023 6,509

Malden Public Schools

District Enrollment

Page 1

June 10, 2023

District Enrollment

School	School Name	PK	K	1	2	3	4	5	6	7	8	9	10	11	12	13	SP	Total
Beebe	Beebe School	1	92	111	108	82	105	94	100	95	99	0	0	0	0	0	0	887
ELC	Early Learning Center	321	0	0	0	0	0	0	0	0	0	0	0	0	0	0	0	321
Ferryway	Ferryway School	0	103	105	99	98	100	96	98	98	92	0	0	0	0	0	0	889
Forestdale	Forestdale School	0	57	67	63	56	69	49	68	80	84	0	0	0	0	0	0	593
Linden	Linden School	0	80	98	96	99	90	83	96	93	94	0	0	0	0	0	0	829
MHS	Malden High School	0	0	0	0	0	0	0	0	0	0	504	493	434	423	7	0	1861
OutDst	Out of District	0	3	0	3	2	4	4	2	7	14	7	4	9	6	8	0	73
Salem	Salemwood School	0	97	136	94	110	112	117	123	128	125	0	0	0	0	0	0	1042
Services	Services Only - Private School	12	0	0	1	1	0	0	0	0	0	0	0	0	0	0	0	14
Totals		334	432	517	464	448	480	443	487	501	508	511	497	443	429	15	0	6509

Update: Welcome Center

Enrollment

Number of students in the queue :

Kindergarten (2023-2024) 244

Grades 1-12: (2023-2024) 28

Waiting lists information :

Beebe: Grades K, 4, 6

Ferryway: Grades 1, 2, 4,

Linden: Grades 6

Salemwood Grade 7, 8



OnLine REGISTRATION

Last Day of School and Summer Reading Lists

Friday, June 16, 2023

Early Dismissal: 11:00am



Summer Reading Information

Malden Public Schools main website and the ['Malden Literacy'](#) website.

The Malden Public Library will also have hard copies of the lists and activity sheets.



2023 SUMMER PROGRAMS



2023 SUMMER PROGRAMS

REQUIRED FOR **PROMOTION**



MHS CREDIT RECOVERY

Grades 9-12
Wed, July 5 - Thu, August 3
Malden High School



TITLE I MIDDLE SCHOOL CREDIT RECOVERY

Current Grades 6-8
Wed, July 5 - Thu, August 3
Malden High School

2023 SUMMER PROGRAMS

ACADEMIC PROGRAMS



ELL SUMMER ENRICHMENT

Rising Grades 3-8 / EL Levels 1-2
Wed, July 5 - Thu, August 3
Salemwood



ELL SUMMER ENRICHMENT

Rising Grade 5 / EL Levels 1-2
Mon, July 10 - Fri, July 14
Salemwood



MALDEN ACADEMIC & ADVENTURES PROGRAM

Rising Grade 9 (*good standing only*)
Mon, July 10 - Thu, July 27
Malden High School



ELL SUMMER ENRICHMENT

Rising Grades 9-12 / MHS EL
Wed, July 5 - Thu, August 3
Malden High School



TITLE I SUMMER ACCELERATION (ELEMENTARY)

Rising Grades K-6
Wed, July 5 - Thu, August 3
Salemwood



EXTENDED SCHOOL YEAR SERVICES

For students with ESY in their IEPs
Wed, July 5 - Thu, August 3
ELC at Beebe, K-8 at Linden,
9-12 at Malden High School

2023 SUMMER PROGRAMS

ENRICHMENT PROGRAMS



CHINESE CULTURE CONNECTION

Rising Grades K-5
Mon, June 26 - Fri, July 28
Forestdale



YWCA SCHOOL AGED CHILD CARE

Rising Grades K-5
St. Paul's Church



HIGH SCHOOL LEADERSHIP INSTITUTE

Rising Grades 9-12
Malden High School



MIDDLE SCHOOL SUMMER STEM/ HIP HOP ENRICHMENT

Rising Grades 6-9
July 10-20
Malden High School



HIGH SCHOOL SCHOOL SUMMER STEM/ HIP HOP ENRICHMENT

Rising Grades 9-12
June 26-July 20
Malden High School



YWCA 21st CENTURY PROGRAM

Rising Grades 3-5 / 6-8
Monday - Thursday
Malden High School



OUT OF SCHOOL TIME SUMMER PROGRAM

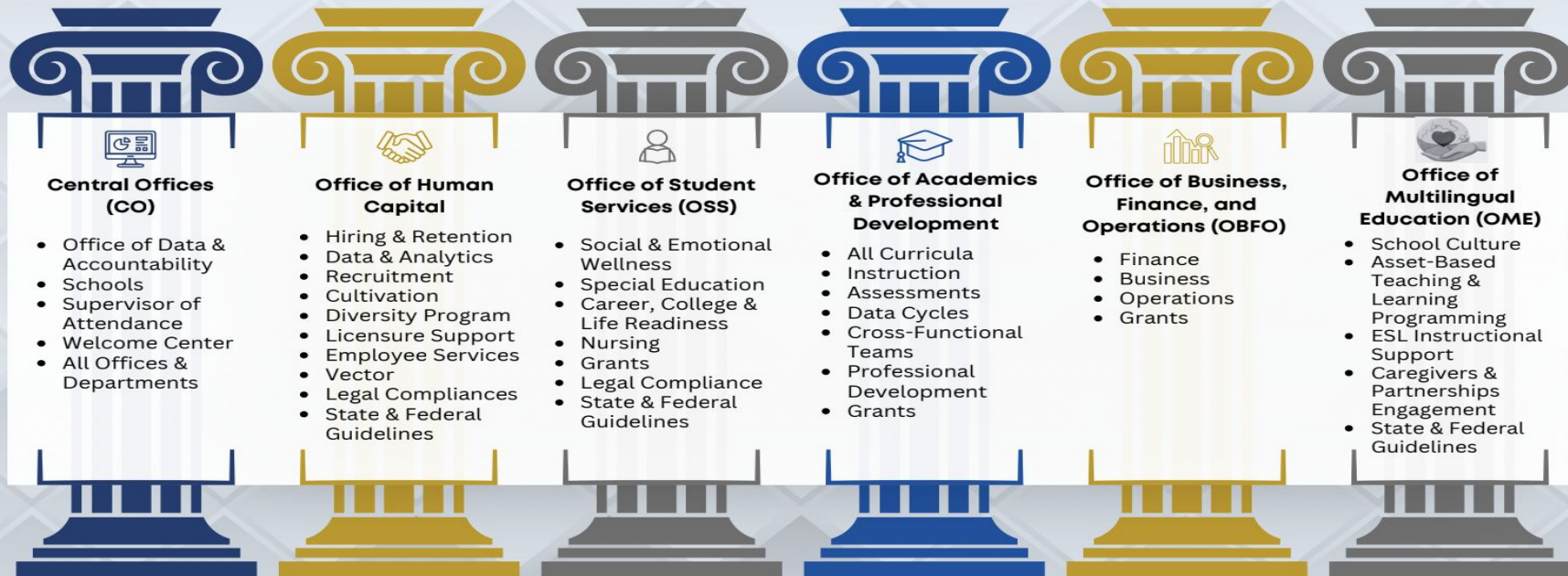
Rising Grades K-6
Mon, June 26 - Fri, July 28
Forestdale

Organization Chart

School Year 2023-2024

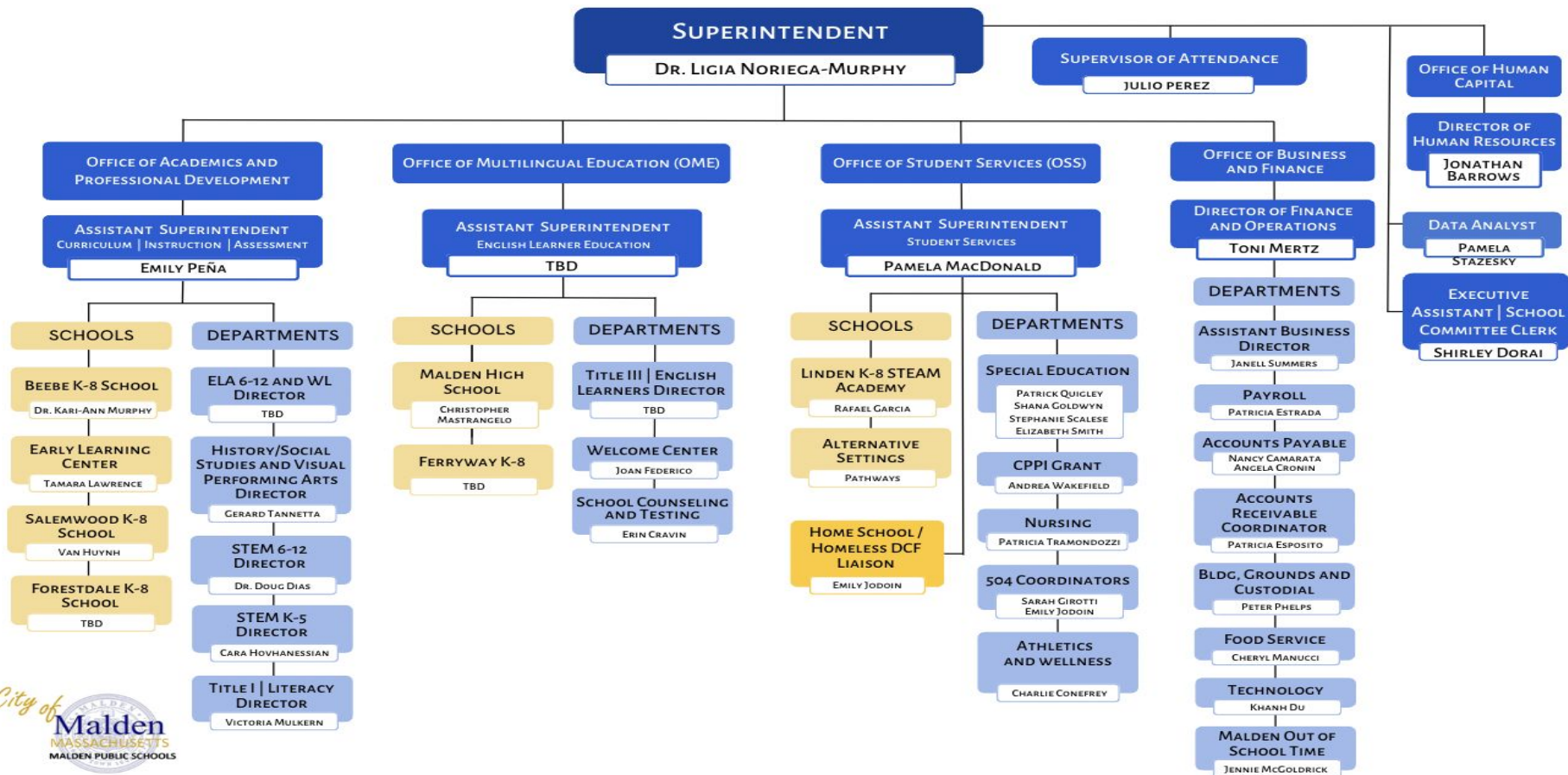


Malden Public Schools Superintendent's Offices

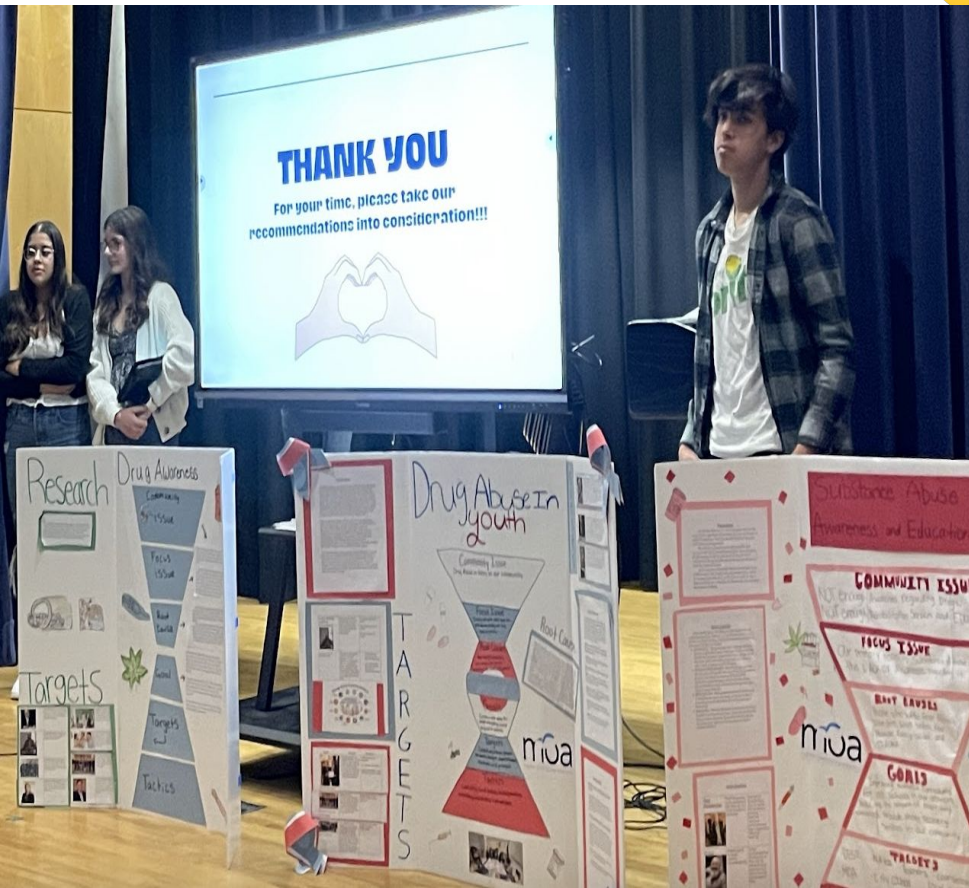


MALDEN PUBLIC SCHOOLS

ORGANIZATION CHART



Multi-Tiered System of Support (MTSS)



MTSS Social Emotional Learning (SEL) Playbook Project Review

Enhancing the Implementation of
Evidenced-Based SEL Practices to Impact
Every Student in Malden Public Schools

June 12,, 2023



Effective School Solutions



What is an SEL MTSS Framework and Why a Playbook?

What is MTSS

- Multi-Tiered System of Support (MTSS) and Response to Intervention (RTI) are rooted in maximizing student learning. Schools originally began using RTI as an alternative to an overpopulation in special education.
- For the purposes of this Playbook we will be discussing the SEL MTSS Framework
- MTSS emphasizes multiple levels of instruction for all learners. MTSS may include a wider range of services within its tiers, focusing not only on academics, but also behavioral, social and emotional supports.
- MTSS ensures practices, policies, and programs are aligned on classroom, school, and district levels. Additionally, MTSS emphasizes professional development and instructional support for general education and support staff to maximize effectiveness.

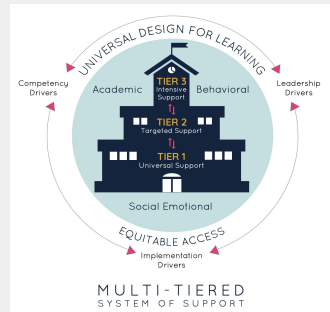
Why a MTSS Playbook?

- Establishes a consistent process for supporting students and assessing growth district-wide
- Defines roles and responsibilities for supporting students, the district, building and classroom level
- Describes the specific supports available to students each tier of support:
 - Tier I - Universal**
 - Tier II - Targeted**
 - Tier III - Intensive/Specialized**
- Provides ongoing support as a reference guide and progress monitoring tool

The Playbook: Key Areas of focus

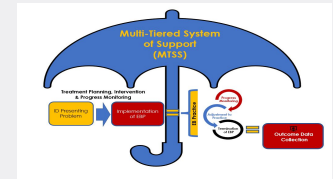
The SEL MTSS Playbook provides detail on the above items, with a robust set of tools and evidenced-based practices contained in the appendix that include:

- Assessment
- safety plans for students
- How to write behavioral goals
- Exit forms
- Columbia-Suicide Severity Rating Scale (C-SSRS) and more



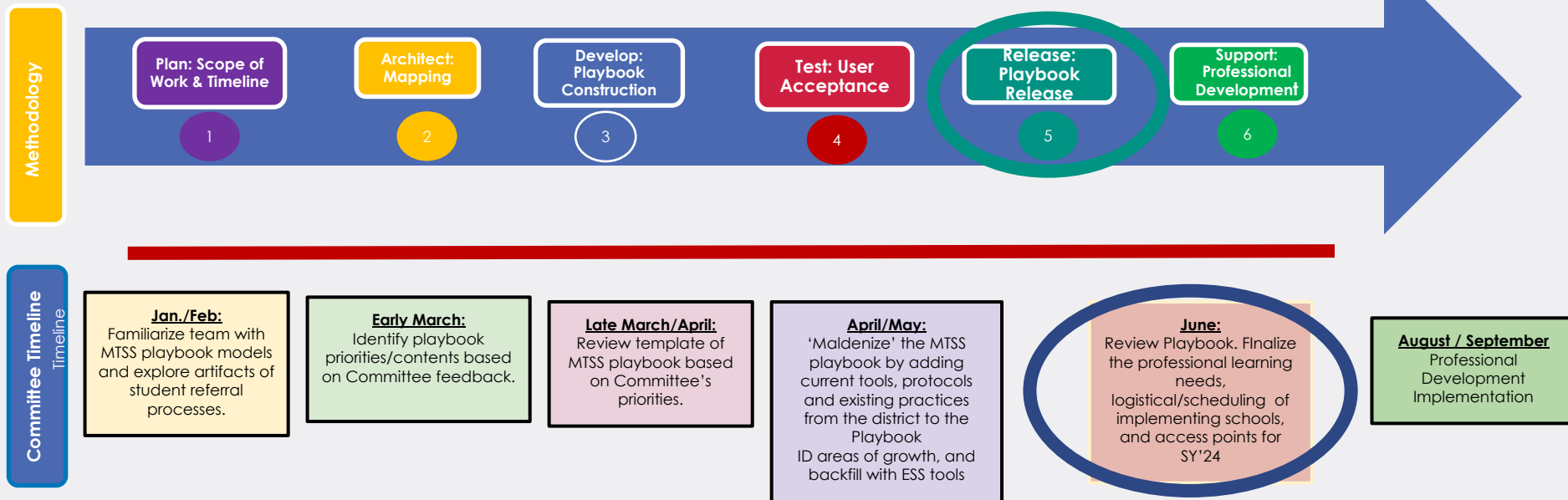
Focus Areas & Goals

- Develop a formalized student referral process that is consistent through all MPS
- Widen the Scope of Students that might be served through the SST Process
- Define the Hierarchy of the Student Support Teams
- Set the Cadence and Agenda for SST Meetings
- Formalize the Progress Monitoring Process



Methodology & Timeline: The Process of Consulting for Playbook Development

The Project followed a cadence of scheduled sessions with key stakeholders & Committee members from all schools to provide details of current processes and structure within the mapping requirement document



Process: Planning members met regularly and completed Homework assignments focused on MPS student referral, SST Hierarchy, functions of their SST' and Interventions along each of their Tiers of support. In addition, ESS Consultants & MPS Executive Leadership-Met Bi-Monthly to augment and shape the playbook after committee meetings

Communication

All information is going to be sent to the MPS community on Tuesday, June 13, 2023!!

- Harassment Policy
- SY 2023-2024 Malden Public Schools Handbook PreK-12
- SY 2023-2024 Malden Public Schools Program of Studies PreK-12
-

Let's Get Ready for SY 2023-2024

**Students, Educators, Staff, Caregivers, Community Members,
and School Committee Members**

Thank you for all your support!

Have a wonderful Summer!

