

# Superintendent's Report

## December 5, 2022

Assistant Superintendent, Curriculum, Instruction, and  
Assessment  
Emilys Peña

# Celebrations! Salemwood Girls on the Run 5K Nov. 20, 2022



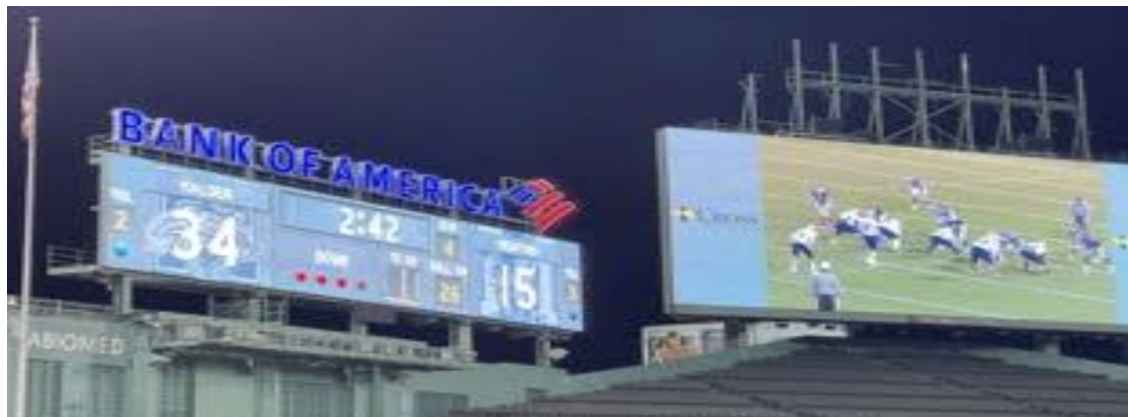
# Celebrations!



## Beebe 3rd Grade Music Concert



# Celebrations! Thanksgiving Unified Football Game



# Celebrations! MHS Play Beauty & the Beast

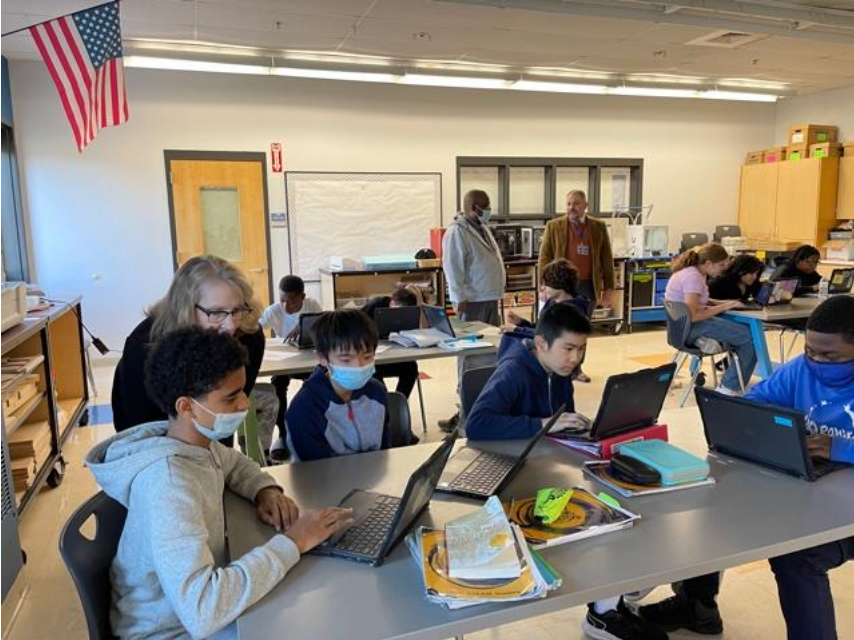




# Celebrations! Ferryway Food Drive



# Celebrations! Linden





# Celebrations! ELC





# Updates



## Agenda:

- District Enrollment
  - Individual Schools
  - Grade Level
- Comparative End of School Enrollment Data
  - SY 2018-2019 to Present
- Welcome Center
- MOST
- Open Positions
- A.E.A.P
- COVID
- Transportation
- Chronic Absenteeism



Happy Winter Break and Happy New Year  
2023!

# District Enrollment

## Malden Public Schools

### District Enrollment

Page 1

December 2, 2022

#### District Enrollment

School	School Name	PK	K	1	2	3	4	5	6	7	8	9	10	11	12	13	SP	Total
Beebe	Beebe School	0	93	111	102	83	110	94	100	99	101	0	0	0	0	0	0	893
ELC	Early Learning Center	263	0	0	0	0	0	0	0	0	0	0	0	0	0	0	0	263
Ferryway	Ferryway School	0	101	110	98	97	100	94	100	96	92	0	0	0	0	0	0	888
Forestdale	Forestdale School	0	55	68	65	56	65	49	69	80	83	0	0	0	0	0	0	590
Linden	Linden School	0	82	94	91	95	86	84	94	96	100	0	0	0	0	0	0	822
MHS	Malden High School	0	0	0	0	0	0	0	0	0	0	497	495	454	411	11	0	1868
OutDst	Out of District	0	1	0	3	2	4	4	3	6	12	5	4	9	6	11	0	70
Salem	Salemwood School	0	99	135	99	109	106	118	121	125	124	0	0	0	0	0	0	1036
Services	Services Only - Private School	9	0	0	0	2	0	0	0	0	0	0	0	0	0	0	0	11
Totals		272	431	518	458	444	471	443	487	502	512	502	499	463	417	22	0	6441



## District Comparative Enrollment Data

**SY18-19**  
**SY19-20**  
**SY20-21**  
**SY21-22**  
**SY22-23**

School Year	Enrollment
2018-2019	6,464
2019-2020	6,481
2020-2021	6,120
2021-2022 (June 5, 2022)	6,471
SY 2022-2023	
September 12, 2022	6,337
October 2, 2022	6,391
November 12, 2022	6,437
December 2, 2022	6,441

# Welcome Center: Enrollment

## Number of students in the queue :

- 7 Kindergarten
- 28 in Grades 1-12

## Waiting lists:

- Beebe Grades K, 4, 6, 8
- Ferryway Grades 1, 4, 6
- Salemwood Grade 8





# MOST Update

School	Enrolled	Waiting List
Beebe	40	16
Forestdale	44	12
Linden	36	8
Salemwood	38	19

## Updates

- Total enrollment up to 158 from 152 in November
- Waitlists are down to 45 from 70
- Hiring is ongoing! 1 Teacher and 2 Assistant Teachers were hired in November
- As staffing continues to increase, more students will be enrolled

# Open Positions Update

## Beebe School

### Position

ESP-I:1 ESP (4 Positions)

ESP-PACE (2 Positions)

Teacher-SEI K-4

## Ferryway

### Position

ESP-Kindergarten

ESP-Transitional 7-8

Teacher-ESL

Teacher-Special Ed/Medically Fragile

Teacher-St. Support 5-8 (Long Term Sub)

## Forestdale

### Position

ESP-ILP Middle School

ESP-ILP (2 Positions)

Registered Behavior Technician

Teacher-Health K-8 (Long Term Sub)

Teacher-Student Support (Long Term Sub)

## Linden

### Position

ESP-Pathways (2 Positions)

Secretary-K-4

Teacher-ESL

## Salemwood

### Position

ESP-I:1 ESP (2 Positions)

ESP-ELL

ESP-K-8

ESP-Pathways

Teacher-Grade 1 (Long Term Sub)

Teacher-Grade 4 (Long Term Sub)

Teacher-Intensive Learning Program Gr. 1

Teacher-Math Gr. 8

Teacher-Physical Ed K-4

Teacher-Science Grade 8 (Long Term Sub)



# Open Positions Update (54)

## Early Learning Center

Position

ESP-1:1 ESP

ESP-ILP (3 Positions)

## MHS

Position

Building Monitor

ESP-PACE (3 Positions)

Registered Behavior Technician

Secretary-Principal

Teacher-Chemistry

Teacher-ESL

Teacher-Reading Specialist

Team Chair

## District

Position

504 Coordinator-504 Coordinator

Adjustment Counselor

Coach-ESL Coach

Parent Liaison-Bilingual

Psychologist (2 Positions)

Registered Behavior Technician

# A.E.A.P Update

## Update:

- There have been seven meetings of the A.E.A.P. Working Group.
- At our last meeting on 11/28, we had two teachers from the AEAP group attend to share their experiences as well as to help us get a clearer understanding of the program.
- At previous meetings, we have discussed professional development for teachers, enrollment, entrance and exit criteria
- For the Jan 9th School Committee meeting, we will have a presentation that includes a review of the data and impressions of the program.



# Update: A.E.A.P.

<b>Enrollment</b>	<b>Grade 4</b>	<b>Grade 5</b>	<b>Grade 6</b>	<b>Grade 7</b>	<b>Grade 8</b>
<b>Accepted in the program</b>	<b>22</b>	<b>24</b>	<b>24</b>	<b>23</b>	<b>25</b>
<b>Oct. 3, 2022</b>	<b>22</b>	<b>22</b>	<b>21</b>	<b>22</b>	<b>24</b>
<b>Nov. 12, 2022</b>	<b>22</b>	<b>21</b>	<b>21</b>	<b>22</b>	<b>25</b>
<b>Dec. 2, 2022</b>	<b>22</b>	<b>21</b>	<b>21</b>	<b>22</b>	<b>25</b>

# COVID Cases and Cleaning Protocols Updates

## Cleaning and Sanitizing Protocols:

- Regular Classroom and Building Cleaning protocols are in place.
- All schools and central offices have hand sanitizers in every single main entrance,
- We have hand sanitizers and masks available to students and adults in all our schools' main lobbies, offices, and cafeterias. We provide hand sanitizers for each classroom and bathroom.

## Best Practices:

- Our schools' nurses are monitoring all COVID cases reported to them
- Rapid Test were sent home with any staff and student that requested one before the Thanksgiving break. Rapid tests will also be sent home before the Holiday Break. They are also readily available in the nurses' office to staff and students.
- We have masks available as well.

## Cases

- From the opening of school from 11/1/22 to 12/2/22 (Please note reporting is on a voluntary basis)
  - 20 staff cases reported
  - 44 student cases reported

# Transportation Update

## NRT

- Bi-Weekly meetings with NRT as well as ongoing daily communication to troubleshoot real time issues
- Additional route for ELC is being added on December 12th. They are onboarding and training a driver for that route.
- We informally tracked arrivals and departures of busses and have seen an improvement in punctuality since the addition of the vans to supplement the buses.
- Working on the pilot of “Find My Bus”, a real time app that allows parents to see the exact location of their child’s bus.
- Please reach out to Special Education Offices with any issues. We have had a good success rate of troubleshooting and working with NRT to solve problems. However, we need to know about the issues!



# Prevent Chronic Absenteeism



Schools are in session for only  
180 DAYS for students (Snow days 185)

Months	Number of Days
December	14 days * Early Dismissal December 23th at 11:00am
January 23	20
February	15
March	23
April	15
May	22
June	10 Seniors 2 days

# Happy Winter Break!

School Resumes on January 3, 2023

