

# Superintendent's Report

## November 14, 2022

Superintendent  
Dr. Noriega-Murphy

# Updates



- District Enrollment
  - Individual Schools
  - Grade Level
- Comparative Enrollment Data
  - SY 2018-2019 to Present
  - Safety Training for Caregivers
  - Events
- Honors Pilot Program
- Welcome Center
- MOST
- Open Positions
- A.E.A.P
- Instructional Focus
  - Days in School
- Data Accountability Report
  - MCAS
  - iXL, iReady, Dibels
- Happy Thanksgiving Break!!



# District Enrollment

## Malden Public Schools

### District Enrollment

Page 1

November 12, 2022

#### District Enrollment

School	School Name	PK	K	1	2	3	4	5	6	7	8	9	10	11	12	13	SP	Total
Beebe	Beebe School	0	93	110	100	84	109	94	99	99	100	0	0	0	0	0	0	888
ELC	Early Learning Center	262	0	0	0	0	0	0	0	0	0	0	0	0	0	0	0	262
Ferryway	Ferryway School	0	101	111	98	96	100	96	100	96	93	0	0	0	0	0	0	891
Forestdale	Forestdale School	0	57	68	65	56	66	49	69	80	83	0	0	0	0	0	0	593
Linden	Linden School	0	84	90	90	96	87	84	94	95	99	0	0	0	0	0	0	819
MHS	Malden High School	0	0	0	0	0	0	0	0	0	0	501	492	454	414	11	0	1872
OutDst	Out of District	0	1	1	2	2	4	4	3	5	12	5	4	9	6	11	0	69
Salem	Salemwood School	0	96	137	98	110	107	119	118	125	122	0	0	0	0	0	0	1032
Services	Services Only - Private School	9	0	0	0	2	0	0	0	0	0	0	0	0	0	0	0	11
Totals		271	432	517	453	446	473	446	483	500	509	506	496	463	420	22	0	6437

# District Comparative Enrollment Data

SY18-19

SY19-20

SY20-21

SY21-22

SY22-23

School Year	Enrollment
2018-2019	6,464
2019-2020	6,481
2020-2021	6,120
June 5, 2022	6,471
<b>SY 2022-2023</b>	
September 12, 2022	6,337
October 2, 2022	6,391
November 12, 2022	6,437

# Safety Training For Caregivers Nov. 2, 2022



# Events: Our Students – Our Community!



# Events

COVID COPING  
STRATEGY CONTEST



## SHARING AMAZING LESSONS LEARNED DURING THE COVID

To help more people live **better** during the pandemic, we are soliciting **creative** ideas and activities that are **educational**, **inspirational**, and **entertaining**.

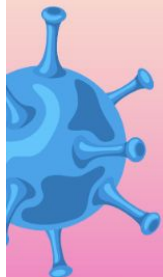
### Age Group:

School age G4-G8, G9-12, Young Adults and Adults

### Prizes:

For the six winners will be \$200, \$150, \$100, \$50, and \$25 **gift cards**, and a **book** for the 6th place of respective winners - one person per entry.

**Award Presentation:** Dec. 10, 6:30-8:30 PM at Malden Senior Center



### To Participate:

Please submit your entry to [info@ChineseCultureConnection.org](mailto:info@ChineseCultureConnection.org) and [info@MaldenReads.org](mailto:info@MaldenReads.org) anytime until **November 14**. Winners will be notified via email on **Dec. 1, 2022**.

**DANCE MOVEMENT**

**AND OTHER UNIQUE CREATIONS...**

Contact Us: [info@ChineseCultureConnection.org](mailto:info@ChineseCultureConnection.org) | 781-321-6316

### We Want:

ESSAY

MUSIC

POETRY

COOKING

ARTWORK

MHS Play Production

Presents:

Disney's

## BEAUTY AND THE BEAST

Lyrics by

Howard Ashman & Tim Rice

Music by

Alan Menken

Book by

Linda Woolverton

Nov. 18 - 7 P.M.  
Nov. 19 - 1 P.M. and 7 P.M.

\$5 students  
\$10 general admission

email  
[lderosa@maldenps.org](mailto:lderosa@maldenps.org) for  
tickets

Originally Directed by  
Robert Jess Roth

Originally Produced by  
Disney Theatrical Productions

Original Music Supervision and New Arrangements by Michael Kosarin

Dance Music Arrangements by Glen Kelly  
Orchestrations by Danny Troob



# Update: Honors Pilot Program

## Honors Pilot Program SY 2022–2023

The goal for the pilot program is to start offering honors designation to middle school students starting Term 3 while putting the structures in place to monitor all of the criteria established for the honors program for full implementation for SY 2023–2024

The criteria is as follows:

1. Honors Pathway is offered in the four separate / individual core content areas: ELA, Math, Science, and History
2. Attendance 90–100%
3. Grades in the class as well as honors content: A+ / B +
4. Homework completion 80+%
5. Differentiated assignments:
  - a. Complex multi steps assignments
  - b. Not more work, rather differentiated work
6. 10 hours of Community Service within their school community (e.i., reading Buddies, mentorship, etc.)
7. No disciplinary record



# Update: Honors Pilot Program

Principals in collaboration with teachers will determine students who meet the Honors courses criteria by Term 3. We want all students in grades 6-8 to have the opportunity to participate in terms 1, 2, and 3.

*The final Honor Courses determination will be reflected in the students' transcript and will be based on the students' final grade, yearly attendance, completion of 10 hours of in-house or out of school community service, and no disciplinary records.*

The district will provide Principals with the following data on the following core content areas:  
ELA, Math, Science, and History:

- List of students with 90-100% attendance
- List of students enrolled in grades 6-8 with A/B+ in ELA, MATH, Science, and History/Social Studies.

# Update: HR and Working Groups

## Human Resources:

- Waivers
- Emergency Licensures
- Approaching Licenses Expiration
- Expired Licenses

## Working Groups:

- **Code of Conduct**
  - Looking at root causes, educating students instead of focusing on behaviors
- **Program of Studies**
  - Minutes on learning, Course Offerings K-4 and 5-8, 9-12
- **Handbook PreK-12**



# Update: Welcome Center

## Enrollment

### Number of students in the queue :

Kindergarten: 6  
Grades 1-12: 28

### Waiting lists information :

Beebe: Grades 4 and 8  
Ferryway: Grades 1, 4, and 6  
Linden: Grade 8  
Salemwood: Grade 7



**OnLine REGISTRATION**

# Update: MOST Program

Afterschool Programs at	Enrolled	Waiting List
<b>Beebe</b>	<b>39</b>	<b>18</b>
<b>Forestdale</b>	<b>38</b>	<b>23</b>
<b>Linden</b>	<b>37</b>	<b>10</b>
<b>Salemwood</b>	<b>38</b>	<b>19</b>

## Enrollment Updates

- Total enrollment is up to 152!
- Waitlists down to 70 from 103 in October

# Open Positions Update

## Beebe K-8 (8)

ESP-Integrated Kindergarten

ESP-PACE (2)

ESP-1:1 ESP (4)

Teacher-SEI K-4

## Early Learning Center (5)

ESP-Intensive Learning Program (3)

ESP-1:1 ESP

Speech Lang Pathologist

## Ferryway K-8 (6)

ESP-Kindergarten

ESP-Transitional 7-8

Teacher-Grade 4 (Long Term Sub)

Teacher-ESL

Teacher-Special Education/Medically Fragile

Teacher-Student Support 5-8 (Long Term Sub)

## Linden K-8 (5)

ESP-Pathways (2)

Secretary-Secretary K-4

Teacher-Grade 2 (Long Term Sub)

Teacher-ESL

## Forestdale K-8 (7)

ESP-Intensive Learning Program (2)

ESP-ILP Middle School

Registered Behavior Technician-Registered Behavior Technician

Teacher-Health K-8 (Long Term Sub)

Teacher-Math Grade 7 (Long Term Sub)

Teacher-Student Support (Long Term Sub)

# Open Positions Update (59)

## Malden High School (10)

Building Monitor

Guidance-District Family Counselor

ESP-PACE (2)

Registered Behavior Technician

Secretary-Principal

Teacher-Chemistry

Teacher-ESL

Teacher-Therapeutic Special Education

Team Chair

## Salemwood K-8 (11)

ESP-ESL

ESP-1:1 ESP (2)

ESP-Pathways

Teacher-Grade 1 (Long Term Sub)

Teacher-Grade 4 (Long Term Sub)

Teacher-Intensive Learning Program Gr. 1

Teacher-Math Gr. 8

Teacher-Physical Ed K-4

Teacher-Science Grade 8 (Long Term Sub)

Teacher-SEI Grade 8

## District (7)

504 Coordinator-504 Coordinator

Welcome Center- Bilingual Parent Liaison

ESL Literacy Assistant

Coach-ESL Coach

Psychologist-Psychologist (2)

Registered Behavior Technician

# Update: A.E.A.P

<b>Enrollment</b>	<b>Grade 4</b>	<b>Grade 5</b>	<b>Grade 6</b>	<b>Grade 7</b>	<b>Grade 8</b>
<b>Accepted in the program</b>	<b>22</b>	<b>24</b>	<b>24</b>	<b>23</b>	<b>25</b>
<b>Oct. 3, 2022</b>	<b>22</b>	<b>22</b>	<b>21</b>	<b>22</b>	<b>24</b>
<b>Nov. 12, 2022</b>	<b>22</b>	<b>21</b>	<b>21</b>	<b>22</b>	<b>25</b>

# Update: A.E.A.P

- The Working Group has met five times. We have two more meetings scheduled.
- We have added 2 new members to the group to replace the members that have dropped out due to time constraints. We added a teacher and an ESP who is also a parent in the district.
- We have reviewed enrollment, criteria for entrance into program and attendance at the UCONN conference
- In the upcoming meetings, we are planning to review financials and assessment data as well as speak to the teachers in the program

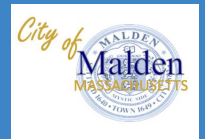


# Data Report Overview of MCAS 2022 Accountability

**SY 2022-2023**

**Emilys Peña, Assistant Superintendent Curriculum,  
Instruction, and Assessment**

**And Directors**



## Accountability information:

1. DESE school profiles will not include *progress toward improvement targets* due to the state determining that **MCAS 2022 data is the new baseline for districts/state.**
2. Statewide there were dips in MCAS results in ELA, Math and Science compared to MCAS 2019 data (pre-pandemic).
3. The 2022 ELA essay writing scores were at a record low across Massachusetts.
4. Student access to instruction was severely impacted due to absenteeism.
5. DESE advised districts to compare student growth between MCAS 2022 and MCAS 2019. This is due to the fact that the student growth percentile calculation used in 2021 was adjusted.
6. DESE is seeing signs of recovery in some grades and subjects across Massachusetts, including Malden Public Schools.

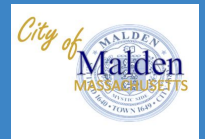
# MCAS Information about 10th Grade Scores

- 2022 school year was the first full MCAS administration for grades 3–8 since 2019.
- Grade 10 students in 2022 had not taken an MCAS test since 2019 (grade 7).
- Pre-Pandemic SY 2010
- Recovery SY 2022

Year	Grades 3-8	Grade 10
2019	Full test administration	Full test administration
2020	<b>No tests administered</b>	<b>No tests administered</b>
2021	<b>Half-test administered</b>	Full test administered
2022	Full test administered	Full test administered

# 11 Year Progress Toward DESE Improvement Ratings

**SY 2022-2023**




# District: 11 Year MCAS Comparison Data

## Malden Public Schools DESE Performance Rating DESE [District Profiles](#)

Year	DESE Progress Toward Improvements	Year	DESE Progress Toward Improvements
<b>2022 Recovery</b>	<b>Not reported</b>	2016	Level 3
2021	50%		
2020	50% Substantial Progress Toward Targets	2015	Level 3
2019 (60% Weight) <b>Pre-Pandemic</b>	50% 46% Averaged with 2018	2014	Level 3
2018 (40% Weight)	56%	2013	Level 3
2017	No Level Next Gen	2012	Level 3

# Beebe K-8 School: 11 Year MCAS Comparison Data

## Beebe K-8 DESE Performance Rating District Profiles

Year	Progress Toward Improvements	Year	Progress Toward Improvements
<b>2022 Recovery</b>	<b>52%</b> 	2016	Level 2 / 61%
2021	61%		
2020	61%	2015	Level 2 / 64%
<b>2019 (60% Weight) Pre-Pandemic</b>	<b>46%</b>	2014	Level 2 / 60%
2018 (40% Weight)	83%	2013	Level 2 / 59%
2017	No Level Next Gen	2012	Level 2 / 57%

# Ferryway K-8 School: 11 Year MCAS Comparison Data

## Ferryway K-8 DESE Performance Rating District Profiles

Year	DESE Progress Toward Improvements	Year	DESE Progress Toward Improvements
<b>2022 Recovery</b>	<b>41%</b>	2016	Level 2 / 52%
2021	59%		
2020	59%	2015	Level 2 / No%
2019 (60% Weights) <b>Pre-Pandemic</b>	<b>65%</b>	2014	Level 2 / No%
2018 (40% Weights)	49%	2013	Level 2 / 64%
2017	No Level	2012	Level 1 / 61%

# Forestdale K-8 School: 11 Year MCAS Comparison Data

## Forestdale K-8 DESE Performance Rating DESE District Profiles

Year	DESE Progress Toward Improvements	Year	DESE Progress Toward Improvements
<b>2022 Recovery</b>	<b>34%</b>	2016	Level 2 / 42%
2021	55%		
2020	55%	2015	Level 2 / 35%
2019 (60% Weight) <b>Pre-Pandemic</b>	<b>43%</b>	2014	Level 2 / 35%
2018 (40% Weight)	74%	2013	Level 2 / 41%
2017	No Level Next Gen	2012	Level 3 / 38%



# Linden K-8 School: 11 Year MCAS Comparison Data


Linden K-8 DESE Performance Rating <a href="#">District Profiles</a>			
Year	DESE Progress Toward Improvements	Year	DESE Progress Toward Improvements
<b>2022 Recovery</b>	<b>54%</b>	2016	Level 2 / 76%
2021	59%		
2020	59%	2015	Level 2 / 77%
2019 (60% Weights) <b>Pre-Pandemic</b>	<b>65%</b>	2014	Level 2 / 73%
2018 (40% Weights)	51%	2013	Level 1 / 69%
2017	No Level Next Gen	2012	Level 1 / 71%



# Malden High School: 11 Year MCAS Comparison Data

**Overall classification:** Requiring assistance or intervention

## Malden High School DESE Performance Rating [DESE School Profile](#)

Year	Progress Toward Improvements	Year	Progress Toward Improvements
<b>2022 Recovery</b>	<b>19%</b> 	2016	20% Level 3
2021	17% Limited or no progress toward targets		
2020	17% Limited or no progress toward targets	2015	22% Level 3
2019 (60% Weight) <b>Pre-Pandemic</b>	<b>17%</b> Limited or no progress toward targets	2014	22% Level 3
2018 (40% Weight)	17% Partially meeting targets	2013	27% Level 3
2017	20% Level 3	2012	35% Level 3



# Salemwood K-8 School: 11 Year MCAS Comparison Data

## Salemwood K-8 MCAS Performance [MCAS DESE District Profiles](#)

Year	DESE Progress Toward Improvements	Year	DESE Progress Toward Improvements
<b>2022 Recovery</b>	<b>26%</b>	2016	Level 2 / 46%
2021	60%	2015	Level 2 / 48%
2020	60%		
2019 (60% Weights) <b>Pre-Pandemic</b>	<b>56%</b>	2014	Level 2 / 47%
2018 (40% Weights)	66%	2013	Level 1 / 40%
2017	No Level	2012	Level 1 / 33%

# STEM MCAS

## Dr. Douglas Dias

Director of Science, Technology,  
Engineering, and Mathematics  
Grades 6-12

## Cara Hovhanessian

Director of Science, Technology,  
Engineering, and Mathematics  
Grades K-5

- STEM Summary
- MCAS Math 3-8
- MCAS Math 10
- MCAS STE 5, 8 and 10
- IXL Math K-12

# MCAS Math Highlights Summary – All & High Needs

## Math MCAS Grades 3–8 2022

Student Group	Exceeds Expectations		Meets Expectations		Partially Meets Expectations		Not Meeting Expectations	
	District	State	District	State	District	State	District	State
& number								
All Students-2694	4%	6%	27%	33%	46%	43%	23%	17%
High Needs-2165	2%	2%	23%	20%	47%	50%	27%	28%

## Math MCAS Grade 10 2022

Student Group	Exceeds Expectations		Meets Expectations		Partially Meets Expectations		Not Meeting Expectations	
	District	State	District	State	District	State	District	State
& number								
All Students-417	9%	11%	33%	38%	41%	40%	18%	10%
High Needs-317	7%	4%	27%	25%	44%	53%	22%	19%

# MCAS Math Summary

Grade Level	2019 Pre-Pandemic			2021			2022 Recovery		
	District	State	Differential	District	State	Differential	District	State	Differential
Grade 3	41%	49%	<b>-8%</b>	24%	33%	<b>-9%</b>	33%	41%	<b>-8%</b> ✓
Grade 4	36%	50%	<b>-14%</b>	22%	33%	<b>-11%</b>	37%	42%	<b>-5%</b> ✓
Grade 5	39%	48%	<b>-9%</b>	17%	33%	<b>-16%</b>	21%	36%	<b>-15%</b>
Grade 6	42%	52%	<b>-10%</b>	24%	33%	<b>-9%</b>	35%	42%	<b>-7%</b> ✓
Grade 7	45%	48%	<b>-3%</b>	27%	35%	<b>-8%</b>	28%	37%	<b>-9%</b>
Grade 8	41%	46%	<b>-5%</b>	31%	32%	<b>-1%</b>	31%	36%	<b>-5%</b> ✓
Grade 10	54%	59%	<b>-5%</b>	42%	52%	<b>-10%</b>	42%	50%	<b>-8%</b>

# MCAS Science/Technology/Math (STE) Summary

## STE MCAS Grades 5 and 8 2022 Disaggregated Data

Student Group & number	Exceeds Expectations		Meets Expectations		Partially Meets Expectations		Not Meeting Expectations	
	District	State	District	State	District	State	District	State
All students-913	4%	6%	29%	36%	45%	40%	22%	18%
High Needs-728	3%	2%	24%	22%	48%	47%	26%	29%

## STE MCAS Grade 10 2022 Disaggregated Data

Student Group & number	Exceeds Expectations		Meets Expectations		Partially Meets Expectations		Not Meeting Expectations	
	District	State	District	State	District	State	District	State
All Students-361	6%	9%	35%	38%	39%	40%	20%	14%
High Needs-268	3%	3%	29%	23%	41%	50%	26%	24%

# Math iXL Data

**SY 2022-2023**





# iXL Math Proficiency Data K-8

## School Year 2021-2022

**MPS IXL K-8 Math Data**  
**Percentage of students meeting or exceeding grade level proficiency**

Sept. 2021 Baseline	Dec. 2021	May 2022 End of Year Data
37%	40%	43%
<b>Target 45%</b>		

## School Year 2022-2023

**MPS IXL K-8 Math Data**  
**Percentage of students meeting or exceeding grade level proficiency**

Sept. 2022 Baseline	Dec. 2022	May 2023 End of Year Data
44%	TBD	TBD
<b>Target 52%</b>		

# iXL Math Proficiency Data 9-12

## School Year 2021-2022

MPS IXL **9-10** Math Data  
Percentage of students meeting or  
exceeding grade level proficiency

Sept. 2021 Baseline	Dec. 2021	May 2022 End of Year Data
12%	12%	27%
<b>Target 35%</b>		

## School Year 2022-2023

MPS IXL **9-12** Math Data  
Percentage of students meeting or  
exceeding grade level proficiency

Sept. 2022 Baseline	Dec. 2022	May 2023 End of Year Data
8%	TBD	TBD
<b>Target 40%</b>		

# iXL K-8 Math Proficiency Data

<b>K-8 Fall IXL Data</b>			
<b>Number of students Tested K-8</b>	<b>Number and Percentage of students on or above grade level</b>	<b>Number and Percentage of students within one grade level</b>	<b>Number of students more than one grade level below</b>
<b>4,206</b>	<b>1745</b> <b>44%</b>	<b>1,065</b> <b>26%</b>	<b>1,199</b> <b>30%</b>

# IXL 9-12 Math Proficiency Data

## 9-12 Fall IXL Data

Number of students Tested	Number of students on/above grade level % of Students on/above grade level	Number of students within one grade level % of students within one grade level	Number of students more than one grade level below % of students more than one grade level below
<b>1817</b>	<b>114</b> <b>8%</b>	<b>190</b> <b>13%</b>	<b>1176</b> <b>79%</b>

## ELA MCAS

### Victoria Mulkern

Literacy and Title I Director

### Amber Malm

Director of English Language Arts (ELA) and  
World Languages (WL)

## MCAS Summary

- 3–8 ELA MCAS Data
- Grade 10 ELA MCAS Data
- Grades K–8 DIBELS Data
- Grades K–8 iReady Data
- Grades 9–11 IXL Data

# MCAS ELA Highlights Summary – All & High Needs


## ELA MCAS Grades 3–8 2022

Student Group	Exceeds Expectations		Meets Expectations		Partially Meets Expectations		Not Meeting Expectations		
	& number	District	State	District	State	District	State	District	State
All Students-2885		5%	6%	31%	35%	43%	42%	21%	17%
High Needs-2103		4%	3%	30%	25%	42%	45%	25%	27%

## ELA MCAS Grade 10 2022

Student Group	Exceeds Expectations		Meets Expectations		Partially Meets Expectations		Not Meeting Expectations		
	& number	District	State	District	State	District	State	District	State
All Students-406		5%	9%	43%	49%	40%	34%	12%	8%
High Needs-263		10%	6%	32%	35%	35%	40%	23%	19%

# MCAS ELA Summary

Grade Level	2019 Pre-Pandemic			2021			2022 Recovery		
	District	State	Differential	District	State	Differential	District	State	Differential
Grade 3	49%	56%	<b>-7%</b>	45%	51%	<b>-6%</b>	37%	44%	<b>-7%</b>
Grade 4	43%	52%	<b>9%</b>	44%	49%	<b>-5%</b>	38%	38%	<b>0%</b>
Grade 5	48%	52%	<b>-4%</b>	34%	47%	<b>-13%</b>	28%	41%	<b>-13%</b>
Grade 6	57%	53%	<b>+6%</b>	37%	47%	<b>-10%</b>	36%	41%	<b>-5%</b>
Grade 7	53%	48%	<b>+5%</b>	41%	43%	<b>-2%</b>	41%	41%	<b>0%</b>
Grade 8	52%	42%	<b>0%</b>	43%	41%	<b>+2%</b>	38%	42%	<b>-4%</b>
Grade 10	47%	61%	<b>-14%</b>	54%	64%	<b>-10%</b>	48%	58%	<b>-10%</b> 

# iReady & IXL Beginning-of-Year 2022/2023 Data

SY 2022-2023





# DIBELS Literacy Proficiency Data K-8

## School Year 2021-2022

**MPS DIBELS Literacy Data**  
**Percentage of students meeting or exceeding**  
**grade level proficiency**

Sept. 2021  
Baseline

Dec. 2021

May 2022 End  
of Year Data

**55%**

**59%**

**63%**

**Target: 65%**

## School Year 2022-2023

**MPS DIBELS Literacy Data and Yearly Targets**  
**Percentage of students meeting or exceeding**  
**grade level proficiency**

Sept. 2022  
Baseline

Dec. 2022

May 2023 End of  
Year Data

**57%**

**TBD**

**TBD**

**Target: 67%**

# DIBELS Literacy Proficiency Data

## K-8 Fall DIBELS Data (Composite Measure)

Number of students Tested	Number of students on/above grade level % of Students on/above grade level	Number of students within one grade level % of students within one grade level	Number of students more than one grade level below % of students more than one grade level below
K-8  3,928	2,243  57%	572  15%	1,113  28%

# iReady Literacy Proficiency Data K-8

## School Year 2021-2022

**MPS i-Ready Literacy Data**  
**Percentage of students meeting or exceeding**  
**grade level proficiency**

Sept. 2021 Baseline	Dec. 2021	May 2022 End of Year Data
32%	40%	49%
<b>Target: 65%*</b>		

## School Year 2022-2023

**MPS i-Ready Literacy Data and Yearly Targets**  
**Percentage of students meeting or exceeding**  
**grade level proficiency**

Sept. 2022 Baseline	Dec. 2022	May 2023 End of Year Data
32%	TBD	TBD
<b>Target: 50%</b>		

# iReady K-8 Literacy Proficiency Data

## K-8 Fall i-Ready Data

Number of students Tested	Number of students on/above grade level % of Students on/above grade level	Number of students within one grade level % of students within one grade level	Number of students more than one grade level below % of students more than one grade level below
<b>Gr. K-8</b>  <b>4,076</b>	<b>1235</b>  <b>31%</b>	<b>1,418</b>  <b>34%</b>	<b>1,423</b>  <b>35%</b>

# iXL Literacy Proficiency Data 9-12

## School Year 2022-2023

**MPS IXL Literacy Data and Yearly Targets**  
**Percentage of students meeting or exceeding grade level proficiency**

Sept. 2022 Baseline	Dec. 2022	May 2023 End of Year Data
29%	TBD	TBD
Target: 40%		

# iXL Literacy 9-11 Proficiency Data

9-11 Fall iXL Data			
Number of students Tested	Number of students on/above grade level % of Students on/above grade level	Number of students within one grade level % of students within one grade level	Number of students more than one grade level below % of students more than one grade level below
9-12	326	149	653
1,129	29%	10%	46%

# iXL Literacy 9-11 Proficiency Data

## 9-11 Fall iXL Data

Grade Level	# of student tested	Number of students on/above grade level % of Students on/above grade level	Number of students within one grade level % of students within one grade level	Number of students more than one grade level below % of students more than one grade level below	# of student not complete
9	388	134 28%	46 9%	208 42%	108
10	395	125 26%	48 10%	223 45%	93
11	346	67 15%	55 12%	224 51%	97

# Instructional Foci



**Literacy**  
**Numeracy**  
***Reduce Chronic  
Absenteeism***




# Attendance is Critical for Academic Success!

Schools are in session for only  
180 DAYS for students (Snow days 185)

Months	Number of School Days
November	9.5
December	17
January 23	20
February	15
March	23
April	15
May	22
June	10 /Seniors 2 days


# HIGH SCHOOL FOOTBALL AT FENWAY PARK




**HIGH SCHOOL**  
**FOOTBALL**  
AT FENWAY

**TUESDAY, NOVEMBER 22**  
BOSTON LATIN ACADEMY VS O'BRYANT - 5:00PM  
MALDEN VS MEDFORD - 7:30PM

MALDEN VS. MEDFORD - 7:30 P.M.



VS



MALDEN  
HIGH SCHOOL

MEDFORD  
HIGH SCHOOL

Malden

Medford

High School Football at Fenway, presented by Cross Insurance, is returning to Fenway Park with a doubleheader scheduled for **November 22**, followed by a tripleheader on **November 23**. General Admission tickets are just \$20, and allow admittance to all games that day.

Private suites are available for all games and start at \$40/person. If interested in learning more, please call (617) 226-6234 or email [bmorse@redsox.com](mailto:bmorse@redsox.com).



# Happy Thanksgiving Break!

