

Aspen X2 Student/Parent Portal Log-On Directions

1. Open the website: www.maldenps.org

2. Click the top link **"FOR PARENTS"**
or use **Quick Links**

The X2 System link can also be found on every school webpage.

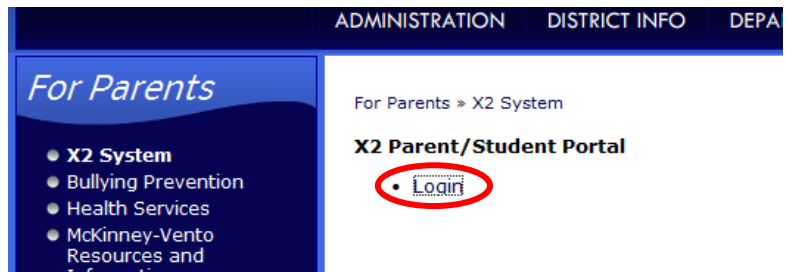


3. Click the link: **X2 System**

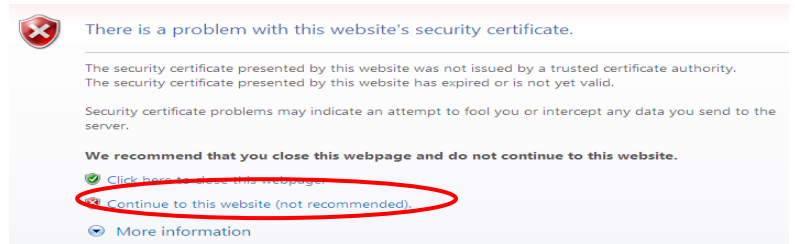
4. Click: **LOGIN**

Login ID is the student's
**first initial, last name and the last 2
digits of the year of graduation**

Example: **jsmith12**



5. If you get the following screen
Click: **"Continue to this website"**



6. Enter: **Login ID**

7. Enter: **Password**

8. Click: **Log On**

****After clicking "Log On" CHANGE PASSWORD if prompted to do so!**

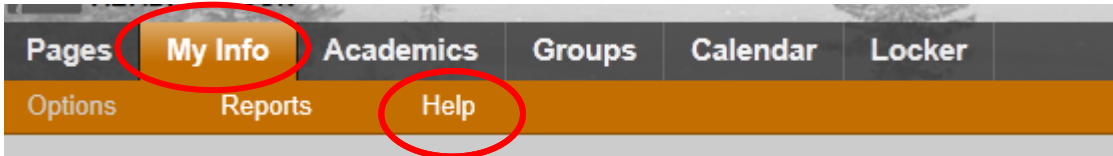
9. Type in the **Security Preference Information**
This screen will appear the first time you log in

10. Click: **Submit**

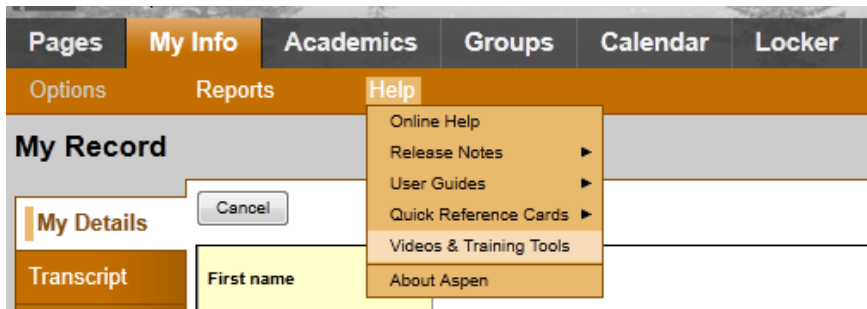
Aspen X2 Student/Parent Portal Resources

Aspen X2 provides online support. Follow the steps below to access these resources.

1. Log into the Student or Family Portal then click any **Top Tab** except Pages.
2. Click **Help** from the menu bar.

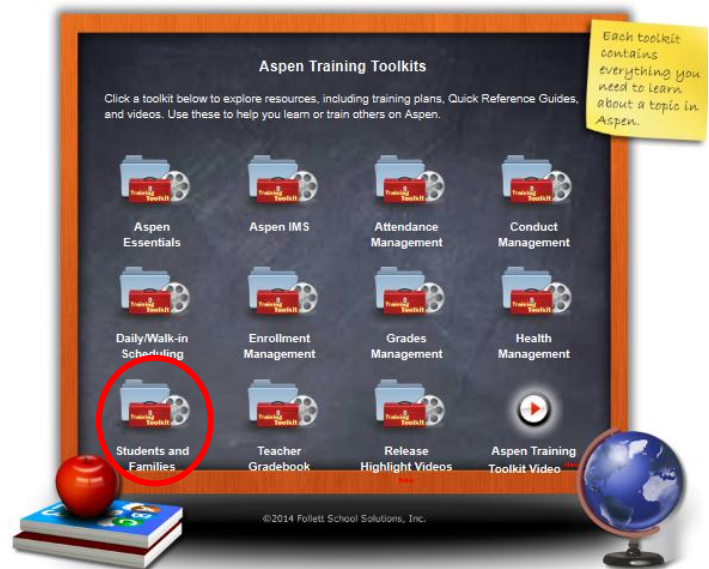


3. Select any of the options under the Help menu to access a variety of resources.



4 Recommended Resources:

- **Videos & Training tools**
 - Click **Students and Families**
 - Click **Student Portal Overview Video**
 - Click **Checking Grades**
 - Click **Emailing Teachers**
 - Click **Using the Calendar**
 - GO MOBILE – Click **Receiving Follett Notifications on your Mobile Device**



- **User Guides** → **Family and Student Portal - User Guide**

Please not that some features in these resources many not be available