

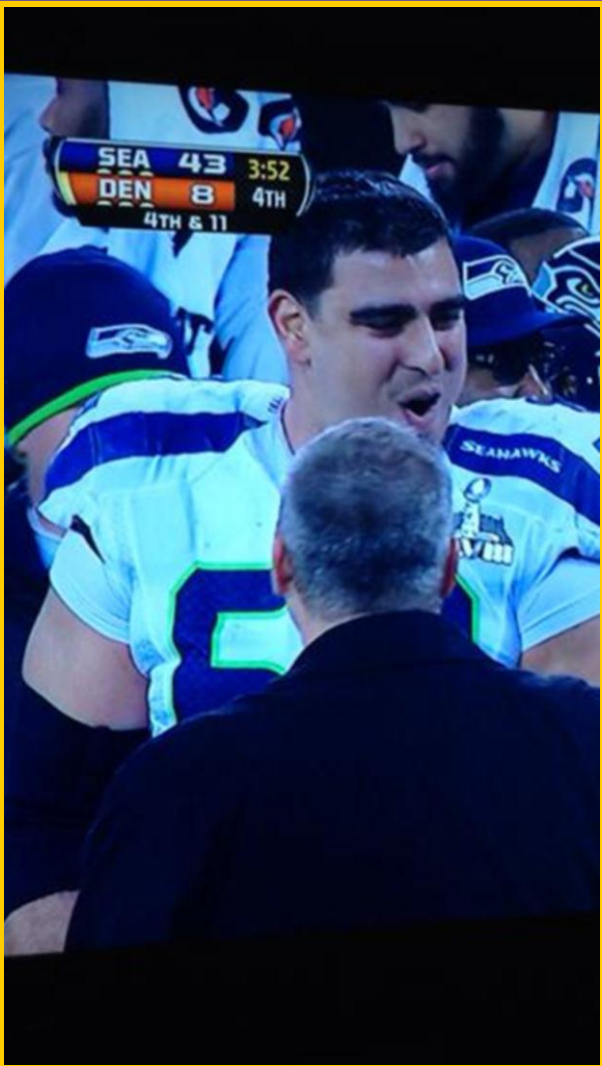


Malden High School  
 77 Salem Street  
 Malden, MA 02148  
 Phone, 781-397-6000  
 Fax, 781-397-7224  
 malden.mec.edu

Tornado  
 Times  
 2013-2014

Monday, February 3, 2014

Volume 11, Number 22/40



**Breno Giacomini, Malden High School Class of 2004, Super Bowl Champion**

*Photo courtesy of Cristi Indeck*

**Malden High School Vision Statement**  
 The Malden High School community believes in the potential of all students to learn, to grow, and to become active, conscientious participants in the 21st century global society. We believe that students learn most effectively in a safe, respectful environment that encourages diverse viewpoints, promotes critical thinking and perseverance, and establishes rigorous standards for all. We honor the diverse nature of our community, promote social awareness and community involvement, and strive to meet the needs of all students through innovative methods and continual professional development. We are committed to ensuring that Malden High School graduates are thoughtful, independent, purpose-driven, lifelong learners. We seek to equip all students with the skills and habits necessary to successfully navigate and contribute to our ever-changing world.

**School notes of interest:**  
**Thank you for a good professional development day. Our good work continues today.**

*The H206 computer lab will be mostly unavailable during the weeks of February 3-February 7 to accommodate guidance lessons.*

However, there are still some spots open. Please feel free to fill in open slots for the H206 computer lab for the upcoming week. Be sure to write your name next you each lunch block you intend to use. Go to the following link to access the sign-out:

<https://techsignup.wikispaces.com/home>

Also, please lock the door from the inside using your bathroom key on your way out. We have had a problem with students using computers without supervision and computer mice going missing. If the door is locked when you arrive, Jenelle Baldassari in H203 has the key.

Please email me if you encounter any computers that are not working.

**The next two weeks at MHS:**

Monday, February 03, 2014	23756	Early Release, Content, <b>MCAS Biology retest</b>
Tuesday, February 04, 2014	671234	<b>MCAS Biology retest</b>
Wednesday, February 05, 2014	567123	
Thursday, February 06, 2014	456712	<b>ACCESS administration to all ELLs</b>
Friday, February 07, 2014	345671	<b>ACCESS administration to all ELLs</b>
Saturday, February 08, 2014	xxxxxx	ACT at MHS
Monday, February 10, 2014	7125	Late-entry,
Tuesday, February 11, 2014	234567	Student Surveys administered
Wednesday, February 12, 2014	123456	Student Surveys administered
		Student Surveys administered ,
Thursday, February 13, 2014	712345	A Night of Love Songs, Jenkins, 7 pm
		Student Surveys administered
Friday, February 14, 2014	671234	February vacation begins at 2:15

February 3, 2014

What we are up to at Malden High School:

1. On Monday, February 3 and Tuesday February 4 we will administer the Biology MCAS retest for some students at Malden High School who have completed a biology course but have not reached the competency determination score for graduation purposes. Impacted rooms include Gallery, the AP Study (B327) and H102, the medical lab classroom (and PE staff directed study room).
2. Federal/State mandated ACCESS testing February 6, 7, 2014 to over 220 ELL students-administered by our ELL staff and our Foreign Language staff. This is a comprehensive and intensive test, culminating with a one-on-one individual speaking section lasting 15-20 minutes per student.
3. DESE Pilot student survey taken by 1850 students in grades 9-12, online and through their ELA classes, February 11, 12, 13,

14-we will use H403, H305, H206, and the Library (+laptop cart).

- a. This is going to impact the Plato Lab, Library, and Science Computer Lab for some periods during the four days.
- b. Each ELA class will be assigned to a computer lab for one period between Tuesday and Friday, February 11-14. During a corresponding period each ELA teacher will be assigned to one of the labs, but not the one where their class is assigned.
- c. Each student in the school has been assigned a random access code to complete the survey on one their classes/teachers. Within their ELA class in the lab the students will all be completing a survey on someone different, possibly their ELA teacher and that is why we need to switch ELA staff during the survey. That is one of the mandated protocols.

**Example:**

**Student John Smith, 232-000-9999-assigned to complete student survey on Environmental Science (and by extension, Environmental Science teacher).**

***We will not be getting individual teacher data to share in this Pilot year.***

4. Introduction to ALICE by Linden Assistant Principal Peter Dolan, March 10 and April 7, 2014 during late-entry, all staff (**no exceptions**), **8:15-9:15 am. ALICE is the school committee approved emergency response program.**
5. Because we are determined to be a Level 3 school we have been meeting with our District and School Assistance Center (DSAC),

a department within the DESE. We are receiving targeted financial assistance from the DSAC and with our funding we contracted with a group called WestEd. <http://www.wested.org/>. On February 13 we will host staff from WestEd as we begin to look at our Special Education and ELL programs and services. In the initial meetings on the 13<sup>th</sup> we will assist WestEd as they develop their plan. After that meeting WestEd staff will establish a schedule where they will interview staff, meet with focus groups, and visit programs/classes over the next several weeks. A full report with recommendations will follow.

**Malden High School ACCESS testing schedule, 2014**

**Day 1, Thursday February 6, 2014**

8:00-10:45 am, Listening and Reading  
According to DESE standards-90 minutes for testing, remainder of time for setup and break between tests

10:45-11:45, Lunch for staff and all ELL students

11:45-1:30, Writing Session  
According to DESE standards 75 minutes for testing

**Day 2, Friday, February 7, 2014-Speaking Test**

8:00-9:00	3 students
9:00-10:00	3 students
10:00-11:00	3 students
<b><u>11:15-11:45 Lunch</u></b>	
12-1:00	3 students
1:00-2:15	4 students

- Listening, Reading, and Writing tests **may be administered in groups of up to 22 students.**

- Listening and Reading tests consist of multiple-choice questions, and **may be administered either separately or together in one session of approximately 90 minutes, with a break between tests.**
- The Writing test prompts students to provide a constructed response and should be **scheduled in one session of 75 minutes, including a break.**

## **Malden High School Expectations**

### **Academic:**

Malden High students are expected to:

- read critically for understanding.
- listen critically for understanding.
- write for a variety of purposes.
- communicate clearly through speaking.
- apply critical thinking skills for reasoning and problem-solving.
- utilize technology to conduct research, to support critical thinking, and to present information.
- work collaboratively with peers and Malden High School staff.
- develop personal interests and goals within a course of study.

### **Personal Growth:**

Malden High students are expected to:

- exhibit responsible, respectful, and appropriate personal behavior.
- demonstrate teamwork and cooperation in their school and in their extended community.
- make informed, healthful decisions in and out of school.

### **Civic Responsibility:**

Malden High students are expected to:

- demonstrate respect for others in their school and in their extended community.
- value and respect school and community property.
- exercise the rights and responsibilities of citizenship in a democracy.